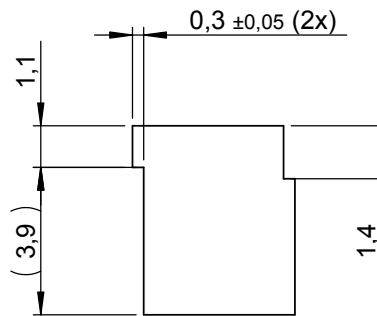
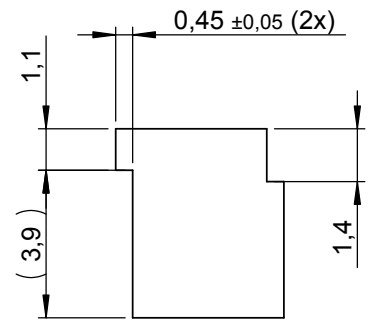


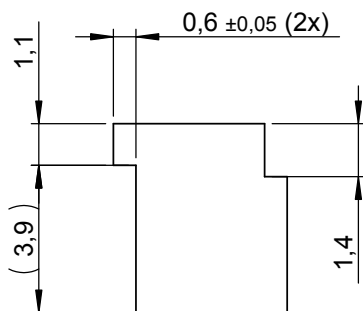
2° Crankshaft Offset
Ducati nr 680 1003 1A
Mark A (1)



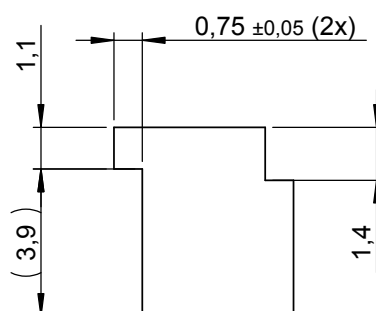
4° Crankshaft Offset
Ducati nr 680 1003 1B
Mark B (2)



6° Crankshaft Offset
Ducati nr 680 1003 1C
Mark C (3)



8° Crankshaft Offset
Ducati nr 680 1003 1D
Mark D (4)



10° Crankshaft Offset
Ducati nr 680 1003 1E
Mark E (5)

Konstr/Drawn L. SÖDERMAN	Datum/Date 2005-03-08	Kontr/Check	Material SS212190. C45K or eqv.	
Ändrad av/Modified by	Ändrad/Modified 2005-03-08	Ytjämnhet/Roughness Ra µm	Ytbehandling/Surface treatment Tumbling	
Där ej annat anges/Unless otherwise stated Gen tol ISO 2768-m Utdrag ur ISO 2768-m Excerpt from ISO 2768-m 0,5-6 ±0,1 Hålkälsradier (6)-30 ±0,2 Fillet radii (30)-120 ±0,3 (120)-400 ±0,5 Kanter brutna (400)-1000 ±0,8 Edges broken	Benämning/Denomination WOODRUFF KEY 4X13 For Ducati timing pulleys		Skala/Scale 5:1	Blad/Sheet 1(1)
			Artikelnr/Article No	Size A4
			Ritn nr/Drawing No	Rev